



Hard Chess Puzzle # 0100

By

G Bud Games
<https://gbud.in>

January 9, 2022

Contents

Hard Chess puzzle # 0100 - Mate in 4 moves	4
Hard chess puzzle 0100	4
Solution to hard chess puzzle 0100	5
Solution 1	5
Solution 2	9
Right moves for the solution to the hard chess puzzle 0100	14
Explanation for the moves	14
Categories of hard chess puzzle 0100	14
hard chess puzzle 0100 chart	15
How to view the solution to hard chess puzzle 0100	17
How to get help for moves in the hard chess puzzle 0100	18
Play chess for free	19

List of Figures

1	Solve this hard chess puzzle 0100. Mate in 4 moves @ https://gbud.in/gqt1dr3	4
2	Solve this hard chess puzzle online with solution @ https://gbud.in/gqt1dr3	4
3	Initial board position of hard chess puzzle 0100	5
4	Rd5+	6
5	Kf4	6
6	Bd6+	7
7	Kg4	7
8	Be6+	8
9	Kh4	8
10	g3#	9
11	Initial board position of hard chess puzzle 0100	10
12	Rd5+	10
13	Kf4	11
14	Bd6+	11
15	Kg4	12
16	Be6+	12
17	Kh4	13
18	Bg3#	13
19	hard chess puzzle 100 chart 1	15
20	hard chess puzzle 100 chart 2	16
21	hard chess puzzle 100 chart 3	16

22	hard chess puzzle 100 chart 4	17
23	Click the solution button to view solutions @ https://gbud.in/gqt1dr3	17
24	Click the help button to get help on next move @ https://gbud.in/gqt1dr3	18
25	Solve more hard puzzles @ https://gbud.in/chshdpz	18
26	Solve other puzzles @ https://gbud.in/chsgppz	18
27	Play chess online for free. Solve puzzles and play with friends	19
28	Solve this puzzle online by scanning this QR code or go to the link below	20

Hard Chess puzzle # 0100 - Mate in 4 moves

Solve this hard chess puzzle and improve your chess games through improvement of your chess strategies and chess tactics. This hard puzzle is a subset of [kids games](#).

Puzzle No : 0100

Difficulty level : hard

Description : Mate in 4 moves

Next Move : White

Player level : Advanced

Short URL for puzzle : <https://gbud.in/gqt1dr3>

Hard chess puzzle 0100

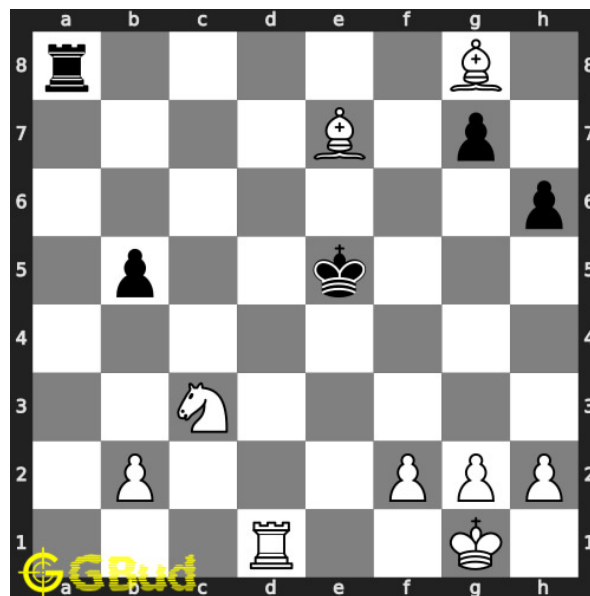


Figure 1: Solve this hard chess puzzle 0100. Mate in 4 moves @ <https://gbud.in/gqt1dr3>



Figure 2: Solve this hard chess puzzle online with solution @ <https://gbud.in/gqt1dr3>

Dont forget to check out [chess puzzles](#), [easy chess puzzles](#), [medium chess puzzles](#), [hard chess puzzles](#) and [chess puzzles collections](#) .

Solution to hard chess puzzle 0100

At this puzzle, next [move](#) is by [White](#). The objective of the puzzle is to mate in 4 moves.

See the interactive solution at the [puzzle page](#)

Solution 1

Initial board position This is the initial board position of hard chess puzzle 0100.

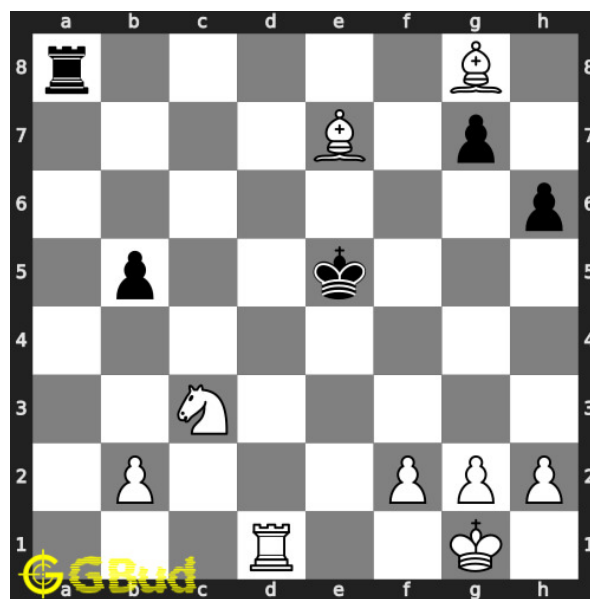


Figure 3: Initial board position of hard chess puzzle 0100

Move 1 Move by white

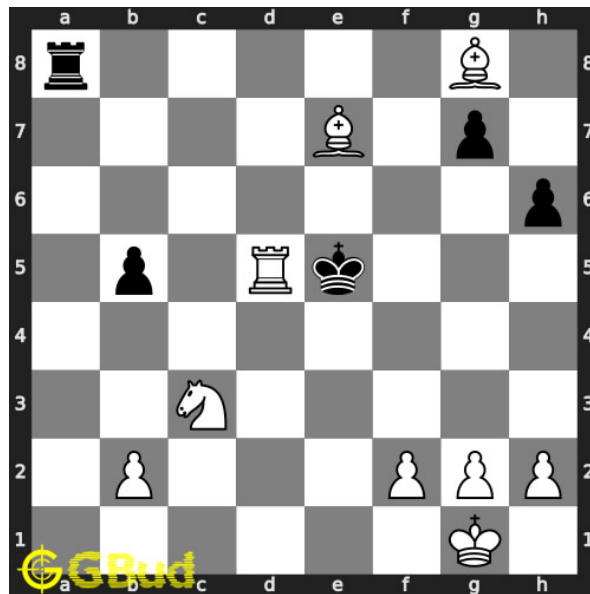


Figure 4: Rd5+

your **rook moves** to d5 and gives **check** to opponent. opponent's **king** can't **capture** your **rook** since it is supported by **knight** and **bishop**.

Move 2 Move by black

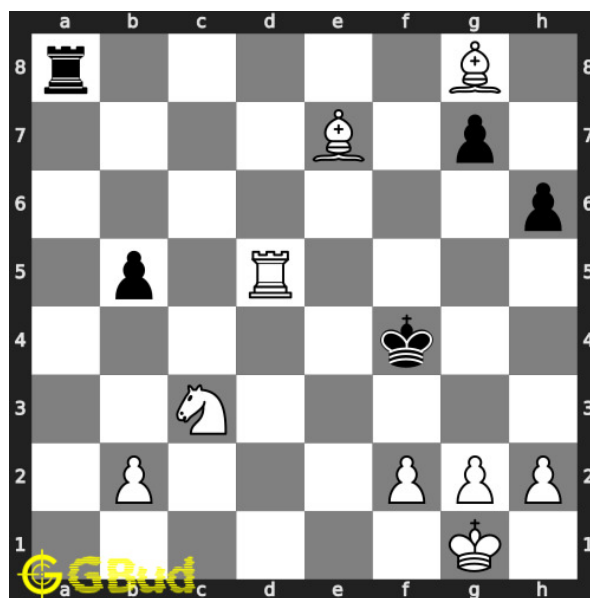


Figure 5: Kf4

opponent's **king moves** to f4 as this is the only legal **move** available. if you give a chance, they will have a back-rank **mate** my moving their **rook**

Move 3 Move by white

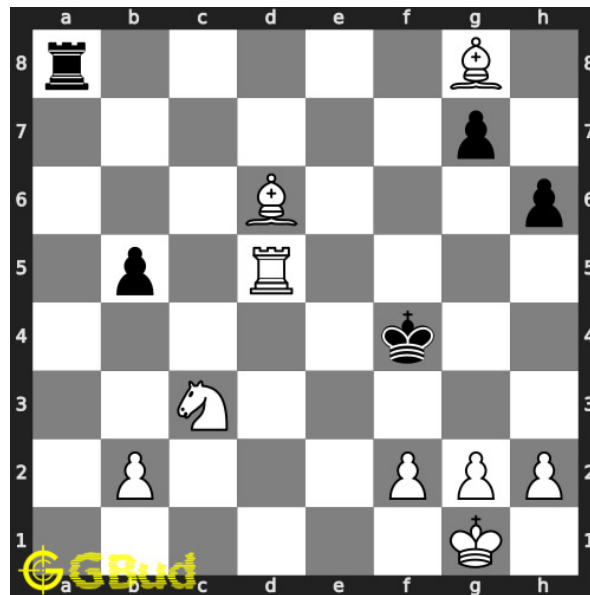


Figure 6: Bd6+

your **bishop moves** to d6 and gives next **check** to opponent.

Move 4 Move by black

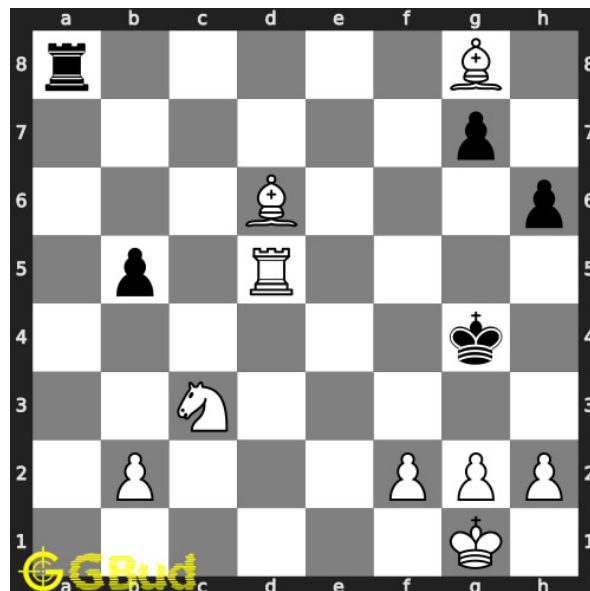


Figure 7: Kg4

opponent's **king moves** to g4 as this is the only legal **move** available.

Move 5 Move by white

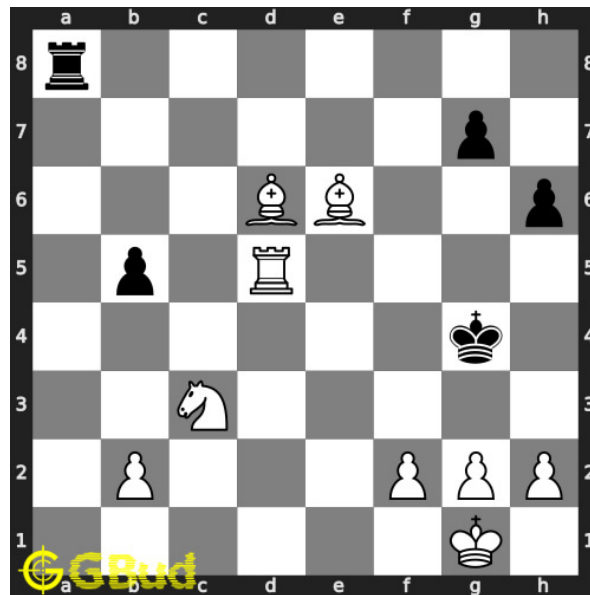


Figure 8: Be6+

your other [bishop moves](#) to e6 and gives next [check](#) to opponent.

Move 6 Move by black

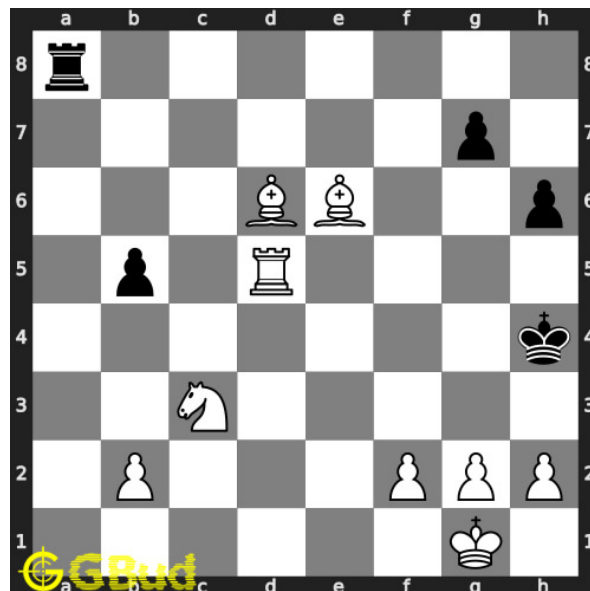


Figure 9: Kh4

opponent's [king moves](#) to h4 as this is the only legal [move](#) available. it can't come to third [rank](#) due to the attack from your [pawns](#).

Move 7 Move by white

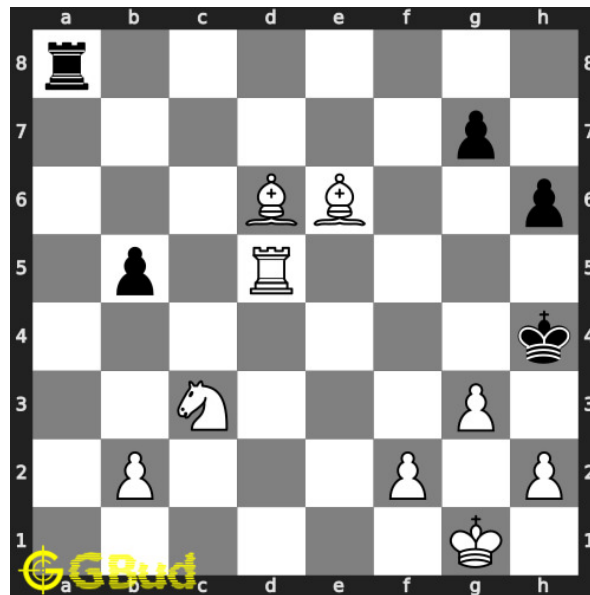


Figure 10: g3#

your **pawn** in **g file** moves and **checkmate**. opponent's **king** can't **capture** your **pawn** since it is supported by the other **pawns**. this is called david and goliath **mate** this is how you can **mate** in 4 **moves**.

Solution 2

Initial board position This is the initial board position of hard chess puzzle 0100.

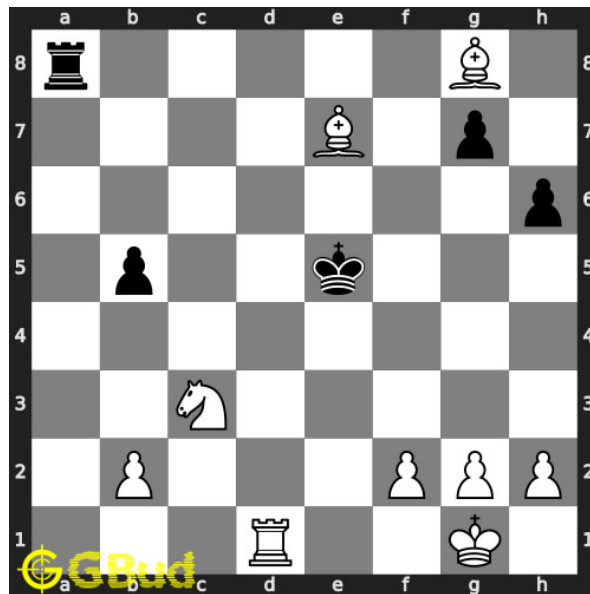


Figure 11: Initial board position of hard chess puzzle 0100

Move 1 Move by white

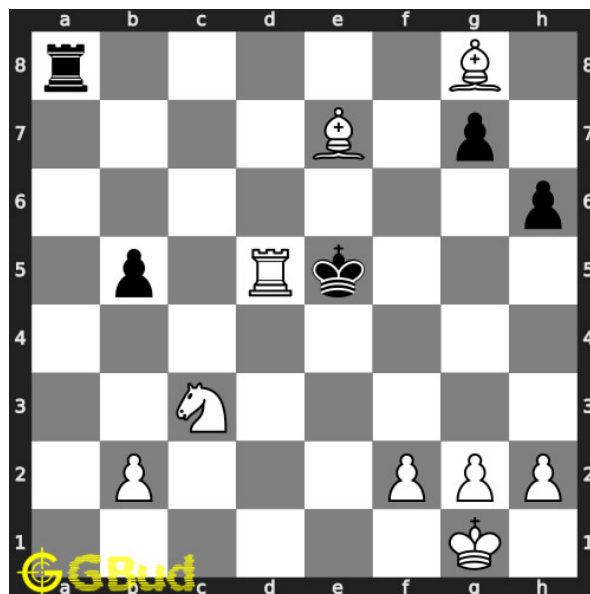


Figure 12: Rd5+

your **rook** moves to d5 and gives **check** to opponent. opponent's **king** can't capture your **rook** since it is supported by **knight** and **bishop**.

Move 2 Move by black

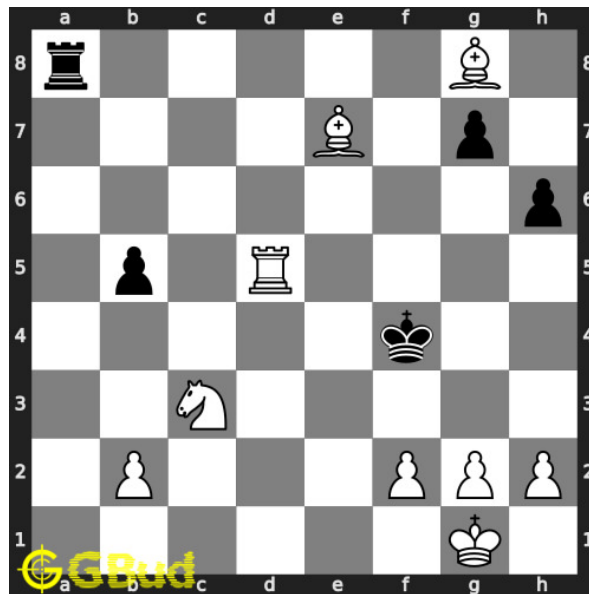


Figure 13: Kf4

opponent's **king** moves to f4 as this is the only legal **move** available. if you give a chance, they will have a back-rank **mate** my moving their **rook**

Move 3 Move by white

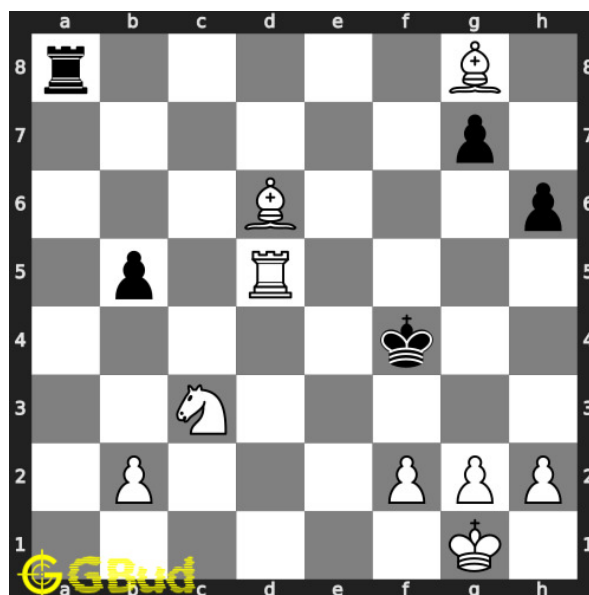


Figure 14: Bd6+

your **bishop** moves to d6 and gives next **check** to opponent.

Move 4 Move by black

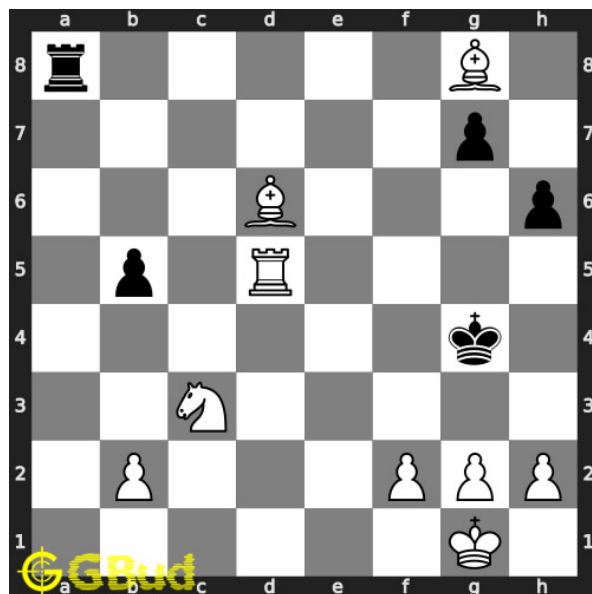


Figure 15: Kg4

opponent's **king moves** to g4 as this is the only legal **move** available.

Move 5 Move by white

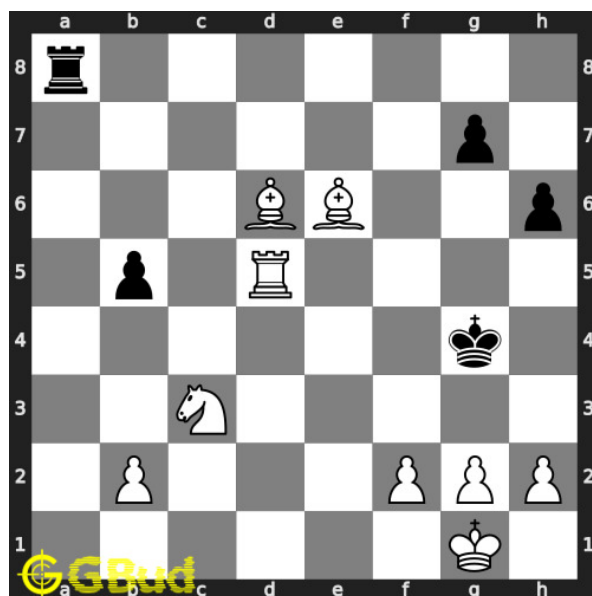


Figure 16: Be6+

your other **bishop moves** to e6 and gives next **check** to opponent.

Move 6 Move by black

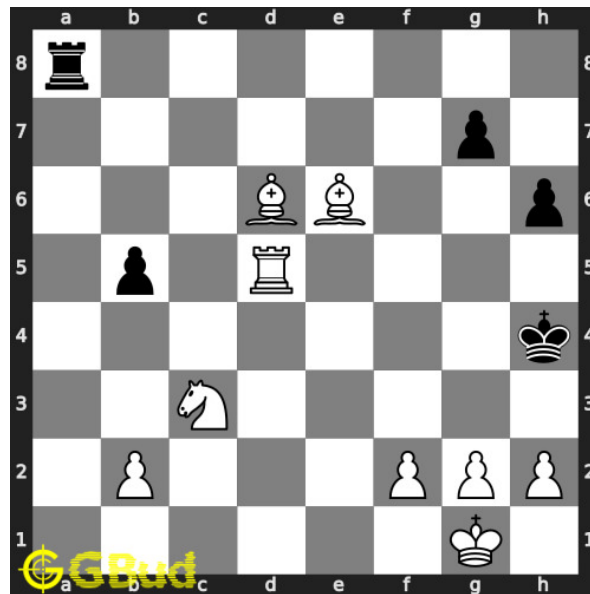


Figure 17: Kh4

opponent's **king moves** to h4 as this is the only legal **move** available. it can't come to third **rank** due to the attack from your **pawns**.

Move 7 Move by white

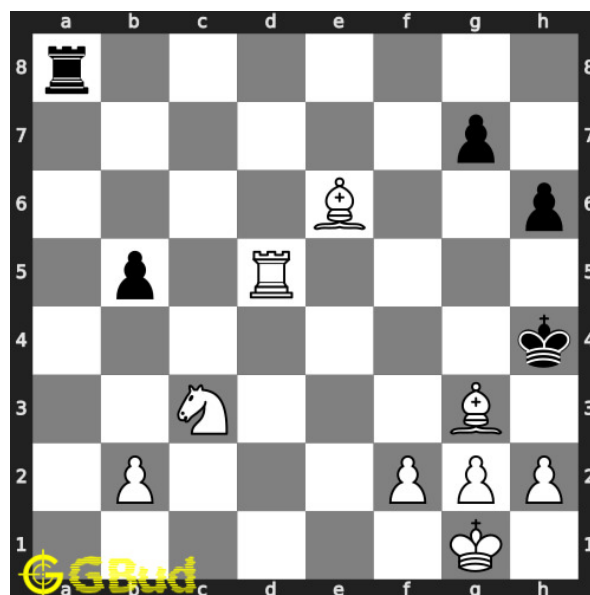


Figure 18: Bg3#

your **bishop moves** to g3 and **checkmate**. opponent's **king** can't **capture** your **bishop** since it is supported by the **pawns**.. this is how you can **mate** in 4 **moves**.

Right moves for the solution to the hard chess puzzle 0100

Based on the objective of the puzzle, you have to make the right moves. Following are the right moves

1. Rd5+, Bd6+, Be6+, g3#
2. Rd5+, Bd6+, Be6+, Bg3#

Explanation for the moves

1. Rd5+ - Your rook moves to d5 and gives check to opponent. Opponent's king can't capture your rook since it is supported by knight and bishop.
2. Kf4 - Opponent's king moves to f4 as this is the only legal move available. If you give a chance, they will have a back-rank mate by moving their rook
3. Bd6+ - Your bishop moves to d6 and gives next check to opponent.
4. Kg4 - Opponent's king moves to g4 as this is the only legal move available.
5. Be6+ - Your other bishop moves to e6 and gives next check to opponent.
6. Kh4 - Opponent's king moves to h4 as this is the only legal move available. It can't come to third rank due to the attack from your pawns.
7. Bg3# - Your bishop moves to g3 and checkmate. Opponent's king can't capture your bishop since it is supported by the pawns.. This is how you can mate in 4 moves.
8. g3# - Your pawn in g file moves and checkmate. Opponent's king can't capture your pawn since it is supported by the other pawns. This is called David and Goliath mate This is how you can mate in 4 moves.
9. For right move - You have had a successful mate in 4 moves. Keep learning new tricks
10. For wrong move - You could have given series of checks and had a mate in 4 moves. Now the opponent will have a back-rank mate. Do not stop trying

Categories of hard chess puzzle 0100

This hard chess puzzle falls in these categories.

1. [Hard chess puzzles](#)

2. Endgame puzzles in chess
3. Strategy puzzles in chess
4. Mate pattern puzzles in chess
5. Mate in 4 puzzles in chess
6. Pawn puzzles in chess
7. Rook puzzles in chess
8. Bishop puzzles in chess

hard chess puzzle 0100 chart



Figure 19: hard chess puzzle 100 chart 1



Figure 20: hard chess puzzle 100 chart 2

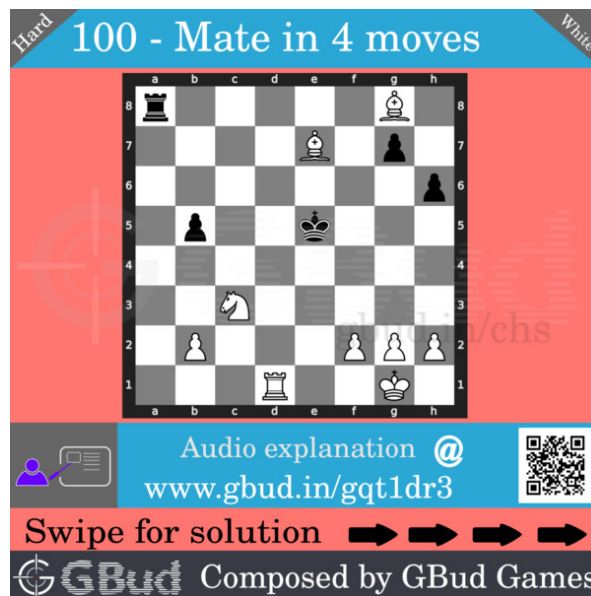


Figure 21: hard chess puzzle 100 chart 3

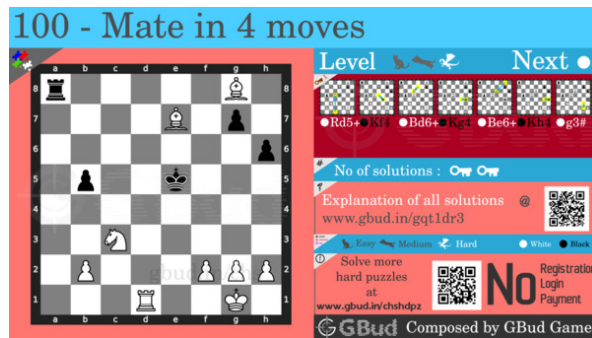


Figure 22: hard chess puzzle 100 chart 4

How to view the solution to hard chess puzzle 0100

To view the [solution to this puzzle](#), follow the steps given below

1. Go to the [puzzle page](#)
2. Click the solution button (Key as shown [below](#)) to view the solution



Figure 23: Click the solution button to view solutions @ <https://gbud.in/gqt1dr3>

How to get help for moves in the hard chess puzzle 0100

To get help or the possible next moves in the puzzle, , follow the steps given below

1. Go to the [puzzle page](#)
2. Click the help button (exclamation mark as shown [below](#)) to get help or suggestion on next possible [move](#)



Figure 24: Click the help button to get help on next move @ <https://gbud.in/gqt1dr3>



Figure 25: Solve more hard puzzles @ <https://gbud.in/chshdpz>



Figure 26: Solve other puzzles @ <https://gbud.in/chsgppz>

Play chess for free

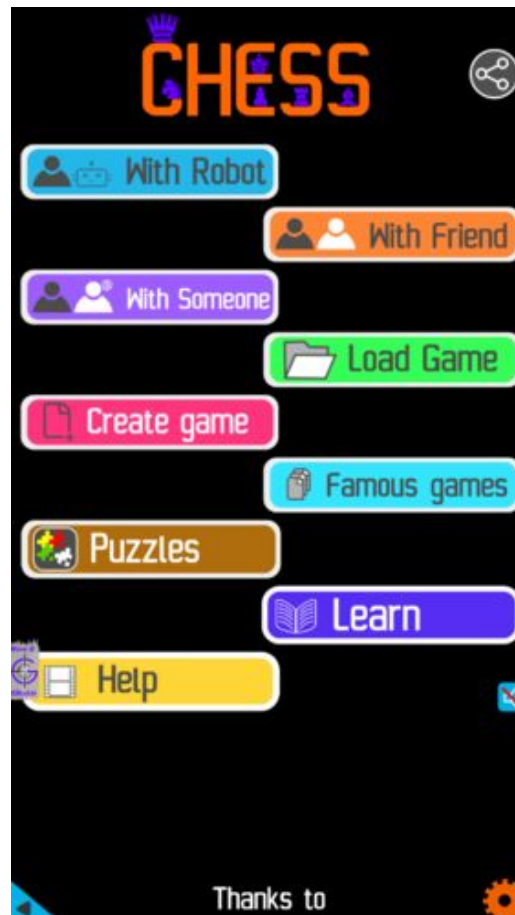


Figure 27: Play chess online for free. Solve puzzles and play with friends

Play chess for free at <https://gbud.in/chs>

We present you a platform to play chess online with friends for free. No need to install any app. You can play chess for free without registration or login.

Simple. You can do several chess related activities.

1. [solve chess puzzles](#)
2. [learn about chess](#)
3. [play chess with computer](#)
4. [play chess with friend](#)
5. [create your own chess games](#)

6. [fen viewer](#)
7. [fen editor](#)
8. [fen generator](#)
9. [pgn viewer](#)
10. [chess board editor](#)
11. [view famous chess games.](#)



Figure 28: Solve this puzzle online by scanning this QR code or go to the link below

<https://gbud.in/gqt1dr3>

Read the latest article on Hard Chess puzzle # 0100 - Mate in 4 moves by scanning this QR code or click the link

Previous article : « [Hard Chess puzzle # 0099 - Mate in 4 moves](#)

Next article : [Hard chess puzzles](#) »

[Back to top](#)

[Contact Us](#)